



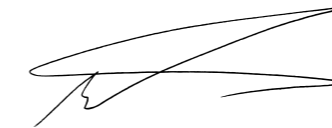
SPORTING GUNS & RIFLES

Welcome

As we celebrate our 250th anniversary in 2025, Best British gunmaking heritage remains at the heart of John Rigby & Co. Since our founding in 1775, we have preserved and refined the time-honoured techniques that define our craft, ensuring that every Rigby is made with the same skill and dedication that has characterised Rigby guns for generations.

This milestone year will feature special edition Rigby rifles and accessories that celebrate our rich heritage, while showcasing the fine craftsmanship that defines our work. Our commitment to keeping traditional gunmaking alive for future generations is embodied in the Rigby Academy, our apprenticeship programme designed to pass on these invaluable skills.

Join us in celebrating not just our history, but the living legacy of craftsmanship that thrives in our London workshop. If you are interested in finding out more about what we do, our team looks forward to welcoming you in-store.



Marc Newton
Managing Director
John Rigby & Co. (Gunmakers) Ltd.

Contents

250 th Anniversary Edition Rifles	4
Highland Stalker	10
Big Game	18
London Best	26
Rising Bite Double Rifle	32
Rising Bite Shotgun	38
Falling Block	44
Shikari Rifle	50
Rigby Engravings	56
Rigby Wood Cellar	60
Rigby Art	62
Traditional English Guncases (TEG)	66
Rigby Accessories	68
Rigby Dagga Boy Award	72
Rigby Safaris	76
Authorised Dealers	78



JOHN RIGBY & Co.
(Gunmakers) LTD
13-19 PENSURRY PLACE
LONDON SW8 4TP
UNITED KINGDOM

Telephone: +44 (0)207 720 0757
Email: rigby@johnrigbyandco.com
Website: johnrigbyandco.com

Rigby 250th Anniversary Edition rifles

To commemorate our 250th anniversary in 2025, we proudly unveil our exclusive anniversary edition rifles, celebrating a remarkable quarter-millennium of Rigby Best gunmaking. The collection of 250 rifles is available in two iconic models: the Big Game and the Highland Stalker. Each rifle is specially engraved to mark this historic milestone for Britain's oldest gunmaker. Designed to be

used, these rifles offer a unique opportunity to own a piece of Rigby history, ready for new adventures in the field. Imagine the stories they will tell as you embark on thrilling hunts and create lasting memories. Not just collectibles; they are a legacy to be passed on to future generations, embodying the spirit of adventure and craftsmanship that has defined Rigby, past and present.





Big Game 250th Anniversary Edition



Deluxe grade
Turkish walnut stock

Classic three-position safety

Back sight regulated to
65, 150 and 250 yards

24-inch traditional Rigby barrel profile

Traditional pistol grip
shape with grip cap

Built on magnum Mauser action
to original specifications

STANDARD FEATURES

- Chambered in .416 Rigby
- Deluxe grade walnut stock with silver oval
- Rigby name and calibre engraved on barrel
- Rigby Big Game text engraved on ¼ rib
- Back sight engraved and regulated to 65, 150 and 250 yards
- Adjustable front sight bead and removable front sight hood protector
- 1-inch traditional rubber recoil pad
- Rigby oil finish on stock

- Flame blued extractor spring, bolt release spring and magazine follower
- Rigby pattern magazine holds four rounds in .416 Rigby plus one in the chamber
- 14 ½" length of pull
- Double Square Bridge - three position safety and controlled round feed
- Stamped with the 2025 London proof marks
- Housed in Rigby Expedition Case

ENGRAVINGS

- Custom designed 250th edition floor plate
- X of 250 engraved on floor plate
- Engraved 'th' next to the 250 rear sight yardage marker
- Gold inlaid serial number on trigger guard
- Engraved 250th seal logo on the bolt with three panelled checkering

UPGRADES AND ACCESSORIES

A wide range of Big Game upgrades and accessories are available, including higher grades of Turkish walnut, London Best oil finishing, hand engraving, gold inlaid details and colour case hardening on the grip cap and recoil bar. Various additional features are also available, including scope mounts and a custom-built lightweight canvas case.



J. Rigby

22 of 250

.416 Rigby



Highland Stalker 250th Anniversary Edition



Deluxe grade
Turkish walnut stock

Action drilled and
tapped for scope mounts

Traditional Rigby pattern iron sights,
regulated to 65, 150 and 250 yards

22-inch traditional Rigby barrel profile

Round pistol
grip stock

Built on standard Mauser action
to original specifications

STANDARD FEATURES

- Chambered in .275 Rigby
- Deluxe grade Turkish walnut stock with silver oval
- Rigby name and calibre engraved on barrel
- Back sight engraved and regulated to 65, 150 and 250 yards
- Adjustable front sight bead and removable front sight hood protector
- 3/4-inch traditional rubber recoil pad
- Flame blued extractor spring, bolt release spring and magazine follower

- Traditional Rigby profile with hand finished chequering
- Rigby pattern magazine holds four rounds in .275, plus one in the chamber
- 14 1/2" length of pull
- Three-position safety
- Controlled round feed
- Stamped with the 2025 London proof marks
- Housed in Rigby Expedition Case

ENGRAVINGS

- Custom designed 250th edition floor plate
- X of 250 engraved on floor plate
- Engraved 'th' next to the 250 rear sight yardage marker
- Gold inlaid serial number on trigger guard
- Engraved 250th seal logo on the bolt with three panelled checkering

UPGRADES AND ACCESSORIES

Numerous upgrades are available, including specifying stock length and colour case hardening. The wood is available in a range of grades, plus eye-catching gold inlay can be added. Other options include a leather covered pad, London Best oil finish, monogrammed silver oval, scope mounts and a custom built lightweight canvas case.



Highland Stalker

Hailed as a traditional deerstalking rifle, the Highland Stalker is inspired by the same smaller calibre rifles Rigby produced at the turn of the 20th century that were used by iconic British adventurers such as Karamojo

Bell and Jim Corbett. Rigby regards the Scottish Highlands as the birthplace of stalking and the title befitting the rifle. It is designed to be used in any condition no matter the excess of heat or persistence of cold.

“*The most exciting rifle that Rigby has created in a generation.*”





Highland Stalker



Adventurer grade
Turkish walnut stock

Action drilled and
tapped for scope mounts

Traditional Rigby pattern iron sights,
regulated to 65, 150 and 250 yards

22-inch traditional Rigby barrel profile

Round pistol
grip stock

Built on standard Mauser action
to original specifications

REDEFINING TRADITION

Everyone knows us for large calibre hunting rifles, so the notion of introducing a new small calibre edition required considerable thought. After the phenomenal response to the commemorative Corbett rifle, we decided to model the Highland Stalker on the look of the original .275 Rigby, which was the ubiquitous rifle of its time. We are extremely proud of the result: the Highland Stalker's striking slim lines and rounded grip shape give it a very traditional feel plus its lightweight frame makes it ideal for the hill. Our aim was to redefine tradition to ensure the Highland Stalker becomes a modern icon in its own right.

STANDARD FEATURES

- Rigby name and calibre engraved on barrel
- Adjustable front sight bead and removable front sight hood protector
- ¼-inch traditional rubber recoil pad
- Rigby oil finish on stock
- Flame blued extractor spring, bolt release spring and magazine follower
- Double R Rigby logo engraved on floor plate
- Hand finished chequering
- 14 ½" length of pull
- 7lb 8oz unloaded
- Three-position safety
- Controlled round feed

CALIBRES

The Highland Stalker is available in the following calibres:

- .275 Rigby
- .308 Win
- .30-06 Springfield
- 8x57
- 9.3x62 Mauser

UPGRADES AND ACCESSORIES

Numerous upgrades are available, including specifying stock length and colour case hardening. The wood is available in a range of grades, plus eye-catching gold inlay can be added in the form of the 'double R' Rigby logo on the floor plate or bolt handle. Other options include a leather covered pad, London Best oil finish and monogrammed silver oval.

DISCOVER
MORE





Highland Stalker Magnum



Red rubber recoil pad

Adventurer grade Turkish walnut stock

Action drilled and tapped for scope mounts

24-inch mid-weight sporter barrel profile

Round pistol grip stock

Built on standard Mauser action to original specifications

SCOPE-READY DESIGN

The magnum version is available in 7mm Rem Mag, .300 Win Mag or .338 Win Mag with a 14½” Rigby oil-finished adventurer grade Turkish walnut stock, fitted with a red rubber recoil pad. As with each Highland Stalker model, it features a flame blued extractor spring, bolt release spring and magazine follower.

STANDARD FEATURES

- Rigby name and calibre engraved on barrel
- Back sight engraved and regulated to 65, 150 and 250 yards
- Adjustable front sight bead and removable front sight hood protector
- ¼-inch traditional rubber recoil pad
- Rigby oil finish on stock
- Flame blue extractor spring, magazine follower and bolt release spring
- Hand finished chequering
- 14 ½” length of pull
- Double R Rigby logo engraved on floor plate

CALIBRES

The Highland Stalker Magnum is available in the following calibres:

- 7mm Rem Mag
- .300 Win Mag
- .338 Win Mag

UPGRADES AND ACCESSORIES

Numerous upgrades are available, including specifying stock length and colour case hardening. The wood is available in a range of grades, plus eye-catching gold inlay can be added in the form of the ‘double R’ Rigby logo on the floor plate or bolt handle. Other options include a leather covered pad, London Best oil finish and monogrammed silver oval.

DISCOVER MORE

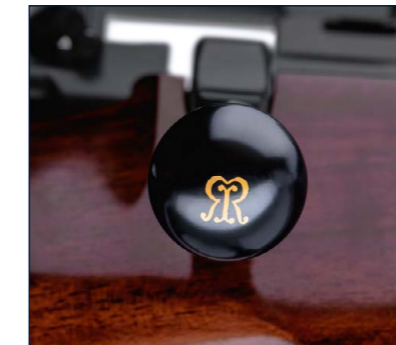
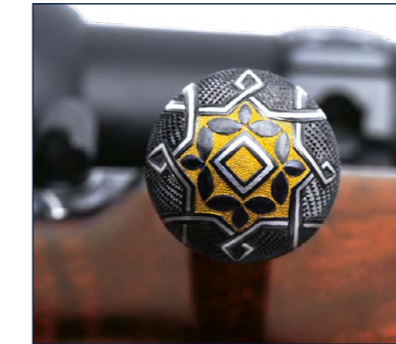




Highland Stalker & Highland Stalker Magnum Upgrades

All our rifles can be personalised and upgraded as desired. Please contact us for more information and up-to-date prices.

- PH, adventurer, deluxe or exhibition grade Turkish walnut stock
- Chequering on bolt handle
- Colour case hardened floor plate, safety housing and/or scope rings
- Custom stock length and shape
- Silver oval in stock with engraved initials
- Gold oval in stock with engraved initials
- Gold engraved 'safe' on flag
- Gold 'double R' Rigby logo on bolt handle
- Gold 'double R' Rigby logo on floor plate
- Gold inlaid back sight
- Gold serial number on trigger guard
- Leather covered recoil pad
- London Best oil finish

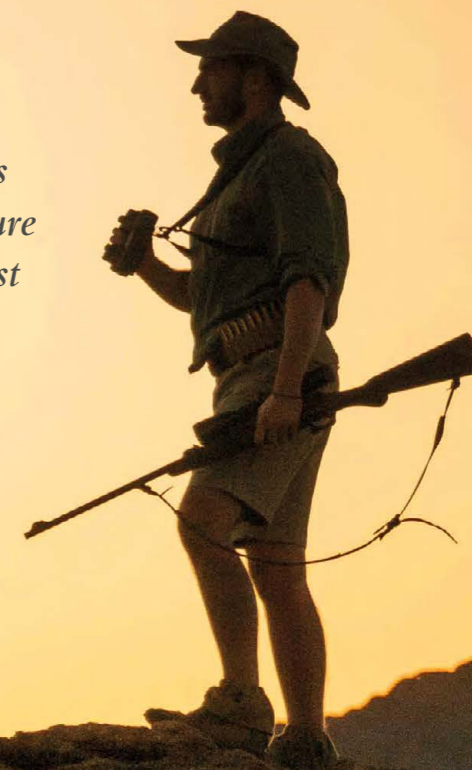


Big Game

True 21st century classics, our Big Game models invoke aspiration and adventure. Hand-built in London on barrelled actions supplied by Mauser, these rifles hark back to the golden age of big game hunting and – like their forebears – are perfectly suited for use around the world.

Original pattern engraving and other classic Rigby design elements sit hand in glove with contemporary features such as a robust, ergonomic stock shape and plasma-nitride finished metal surfaces. Available in three distinct editions: the Big Game, Lightweight and Vintage, made for professional and sporting hunters alike.

“*Every hunter using a Rigby becomes part of the shared history of adventure and British gunmaking of the highest quality.*”





Big Game



Adventurer grade
Turkish walnut stock

Classic three-position safety

Back sight regulated to
65, 150 and 250 yards

24-inch traditional Rigby barrel profile

Built on magnum Mauser action
to original specifications

A MODERN CLASSIC

The original multi award-winning Rigby-Mauser collaboration combining classic design features with practical innovations. Each Big Game rifle features classic Rigby design elements, with a robust, ergonomic stock shape designed for a better fit and heavy recoil absorption. It is specifically created to enhance the large bore experience. The Rigby express sights include a single fixed V and two folding leaves, dovetailed into the quarter-rib. These rifles represent exceptional value and are a benchmark in modern sporting firearms manufacturing.

STANDARD FEATURES

- Rigby name and calibre engraved on barrel
- Rigby Big Game text engraved on front bridge or ¼ rib
- Adjustable front sight bead and removable front sight hood protector
- 1" red rubber recoil pad
- Rigby oil finish on stock
- Flame blued extractor spring, magazine follower and bolt release spring
- Polished and blacked recoil bar and grip cap
- Grip cap with Rigby 'double R' logo
- Rigby pattern magazine holds five rounds in .375, four rounds in .404, four rounds in .416 and three rounds in .450

CALIBRES

- The Big Game is available in the following calibres:
- Double square bridge .375 H&H Magnum
 - Double square bridge .404 Jeffery
 - Double square bridge .416 Rigby
 - Double square bridge .450 Rigby

UPGRADES AND ACCESSORIES

A wide range of Big Game upgrades and accessories are available, these include PH, adventurer, deluxe, exhibition or collector grade Turkish walnut stocks, London Best oil finishing, hand engraving, gold inlaid details and colour case hardening on the grip cap and recoil bar. Various additional features are also available, including scope mounts and custom built cases.

DISCOVER
MORE



Big Game Lightweight

Chambered in .300 H&H and .350 Rigby Magnum, the Big Game Lightweight features a slim 24-inch barrel and a stock profile that mirrors vintage pre-war models housed in the Rigby Museum, it weighs approximately 9.5lb-0.95lb lighter than the standard Big Game. The design includes larger hand-chequered

panels and omits a cheek piece, ensuring a manageable option for hunters pursuing big game. With substantial stopping power and relatively mild recoil, this rifle is ideal for both African plains game and North American big game.



STANDARD FEATURES

- Adventurer grade Turkish walnut stock, no cheek piece with hand-chequered panels
- Rigby name, address and calibre engraved on barrel
- Back sight engraved and regulated to 65, 150 and 250 yards
- Adjustable front sight bead and removable front sight hood protector
- 1" red rubber recoil pad
- Rigby oil finish on stock
- Polished and blacked recoil bar and grip cap

- Grip cap lid polished and blacked and engraved with Rigby 'double R' logo
- Flame blued extractor spring, magazine follower and bolt release spring
- Rigby pattern magazine holds four rounds in both 300 H&H and 350 Rigby
- 24" barrel
- 14½" length of pull
- Double Square Bridge - three position safety and controlled round feed

DISCOVER
MORE



Big Game Upgrades

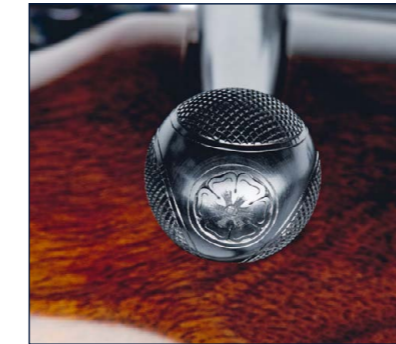
All our rifles can be personalised and upgraded as desired. Please contact us for more information and up-to-date prices.

- PH, adventurer, deluxe or exhibition grade Turkish walnut stock
- Chequering on bolt handle¹
- Colour case hardened floor plate, safety housing and/or scope rings¹
- Custom stock length and shape
- Tudor rose engraved recoil bar and pins¹
- Silver oval in stock with engraved initials
- Gold engraved 'safe' on flag¹
- Gold 'double R' Rigby logo on bolt handle¹

- Gold 'double R' Rigby logo on floor plate¹
- Gold 'double R' Rigby logo on grip cap¹
- Gold inlaid back sight¹
- Gold serial number on trigger guard¹
- Leather covered recoil pad¹
- London Best oil finish¹
- Spare three position flag safety
- Rigby scroll on grip cap¹
- Spare front sight bead in grip cap



¹ Not available on Big Game PH



London Best

Built in much the same way as they were 100 years ago, our London Best rifles incorporate exquisite engraving of choice from some of the world's most renowned engravers and each features a deluxe stock of supreme quality wood. The rifles are fabricated by hand at Rigby's London premises using Mauser actions of various lengths, and premium

quality barrels from our select suppliers. A London Best is a fully custom experience and the choice is yours: pick any calibre; choose from Magnum or standard length action, and double or single square bridge; specify your own barrel length and profile; select your wood, and have the stock shaped to your own personal specifications.

“Our premium London Best guns are bespoke, connoisseur's rifles that perfectly exemplify Rigby's reputation as one of the very best gunmakers in the world.”



London Best



Custom fitted stock made from deluxe grade Turkish walnut

Choice of any calibre and left or right handed action

Custom barrel length and profile

London Best oil finish and barrel black

Colour case hardened grip cap, recoil bar, floor plate and safety

STANDARD FEATURES

- Choice of double or single square bridge action
- Choice of any calibre
- Choice of left or right handed action
- Choice of barrel length (maximum 25")
- Rigby pattern iron sights
- Flip up moon sight for magnum calibres
- Choice of deluxe Turkish walnut stock blank
- Bespoke stock fitting
- Silver oval in stock, engraved with initials or crest
- 'London Best' Barrel black
- 'London Best' oil finish
- Colour case hardened grip cap and recoil bar (calibre dependent)

STANDARD ENGRAVINGS

- Maker's name on barrel
- Stippled sight blocks
- Stippled quarter rib (calibre dependent)
- Action inscription on single square bridge actions (calibre specific)
- Three panel chequered bolt handle with Tudor rose
- Tudor rose engraved pin
- Tudor rose engraved recoil bar
- Tudor rose engraved grip cap lid
- Gold inlaid serial number on trigger guard
- Gold inlaid safe with arrow on shroud
- Gold inlaid calibre on floor plate
- Engraved distance numbers on rear sight's standing V and two folding leaves (65, 150 and 250 yds) with gold centre line and stippled backgrounds

UPGRADES AND ACCESSORIES

Every London Best can be personalised and upgraded to suit a client's requirements. Available upgrades include deluxe, exhibition or collector grade Turkish walnut stocks, gold inlaid details on metalwork and stock, hand engraving and additional colour case hardening. Further options comprise a range of mounting systems and scope rings for telescopic sights, Rigby pattern peep sights, and various take down systems. For more information on upgrades and accessories, see page 28. The lists of upgrades published here and on our website are non-exhaustive. Please contact us to discuss any additional features you would like.

LONDON BEST VINTAGE

The Vintage edition London Best is built to specifications taken from pre-1940 rifles held in our collection. Like all London Bests, it is a rifle custom built according to a client's wishes. Each Vintage edition, however, is built from a historic pattern, and bears a number of features that evoke the Rigbys of the past.

DISCOVER MORE



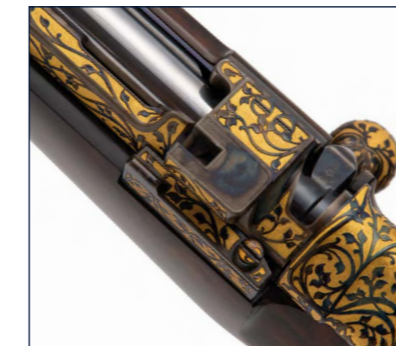
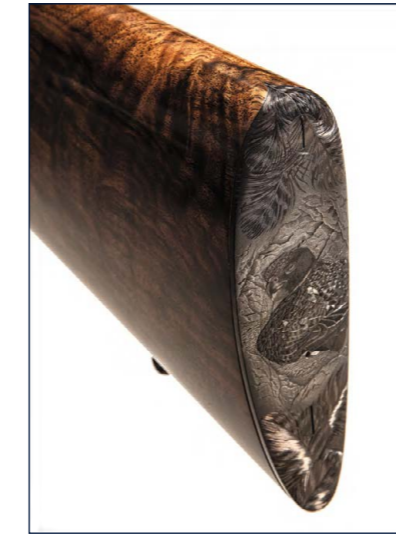


London Best Upgrades

All our rifles can be personalised and upgraded as desired. The lists of upgrades published here and on our website are non-exhaustive. Please contact us to discuss any additional features you would like and up-to-date prices.

- Deluxe, exhibition or collector grade Turkish walnut stock
- Gold oval in stock, engraved with initials or crest
- Gold inlaid distance numbers on back sight
- Gold inlaid 'J. Rigby & Co. London' on barrel
- Gold inlaid 'John Rigby & Co.' and calibre on scope rings
- Gold inlaid Rigby 'double R' logo on bolt handle
- Gold inlaid Rigby text on front bridge or rib
- Gold inlaid animal of choice, Rigby 'double R' logo, or Rigby 'seal' logo on magazine floor plate

- Gold inlaid Rigby 'double R' logo in stock
- Rigby half or full scroll engraving
- Custom engraving
- Swing-off scope rings
- Smithson scope mounts with cover plates
- H&H style side mount
- Colour case hardened scope rings
- Scroll engraving on scope rings
- Colour case hardened magazine box and trigger guard
- Rigby pattern peep sight mounted on cocking piece
- Take down system (stock only or barrel and action)



Accessories

- Leather case with canvas outer
- Vintage pattern canvas case
- Oak and leather case with canvas outer
- Rigby 'London Best' leather and canvas gun slip (made to measure)
- Rigby pattern silent sling
- Case accessories (turnscrews, cleaning rod, oil bottle, jags with pouch, patches, cloth)
- Leather pouch with spare parts (firing pin, spring and blued extractor)

A man wearing a green cap and jacket is shown in profile, aiming a double rifle. The rifle is a Rigby Rising Bite, with the brand name visible on the receiver. The background is a warm, golden sunset with a bright sun low on the horizon, creating a bokeh effect in the trees.

Rising Bite Double Rifle

Named for its unique - and singularly strong - vertical bolt locking system, the Rigby Rising Bite is one of the most famous double rifles ever made. Increasing manufacturing costs meant that regular production at Rigby ceased in 1910, and the last custom order original Rising Bites left the factory in 1932. In 2015,

the first new Rising Bite was completed. It was reverse-engineered from an original Rising Bite that had been delivered to the Maharana of Udaipur in 1902. That pristine action has been replicated in modern, top-quality steel with state-of-the-art technology and a master's hand and eye.

“The Rising Bite doesn't just look good: it's capable of consistently achieving 3/4-inch-groups. For me, it's simply the best shooting double rifle on the planet.”



Rising Bite Double Rifle

Best sidelock ejector with dipped edge lock plates

Traditional full-length rib or Rigby ¼ rib and front sight block

Custom fitted stock made from deluxe grade Turkish walnut



Lever forend release catch and ejector regulation switch inside forend

Colour case hardened action, forend iron and furniture, plus 'London Best' barrel black and oil finish



STANDARD FEATURES

- Best sidelock ejector with dipped edge lock plates
- Choice of barrel lengths
- Chopper lump barrels, mirror bored
- Barrels regulated to 65 yards
- Rigby top extension with vertical bolt
- Traditional full-length rib or Rigby ¼ rib and front sight block
- Bolted safety catch
- Lever forend release catch
- Ejector regulating switch inside forend
- Choice of deluxe Turkish walnut stock blank

- Traditional Rigby pattern full scroll engraving
- Carved folding leaves on fences
- Gold inlaid 'J. Rigby & Co.' on locks and barrels
- Gold inlaid Rigby 'double R' logo on grip cap
- Colour case hardened action, forend iron and furniture
- 'London Best' barrel black and oil finish
- Silver oval in stock, engraved with initials or crest
- Custom stock fitting
- Leather covered recoil pad
- Cross cut or stippled rib

CALIBRES

The Rising Bite is available in the following calibres:

- .275 Rigby
- .303 British
- .350 Rigby No.2
- .450/400 3" Nitro Express
- .416 Rigby No.2
- .450 3 & ¼ Nitro Express
- .470 Nitro Express
- .500 Nitro Express
- .577 Nitro Express
- .600 Nitro Express
- .700 Nitro Express

UPGRADES AND ACCESSORIES

Rising Bite upgrades include: a choice of deluxe, collector or exhibition grade Turkish walnut stock blank; additional gold inlaid details; a gold engraved oval in the stock; custom hand engraving; scope rings, and various scope mounts. Bespoke leather, canvas and oak cases, plus accessories, spare parts and cleaning equipment, are also available. For more information on upgrades and accessories, please contact us.

DISCOVER MORE



Rising Bite Double Rifle Upgrades

All our rifles can be personalised and upgraded as desired. The lists of upgrades published here and on our website are non-exhaustive. Please contact us to discuss any additional features you would like and up-to-date prices.

- Deluxe, exhibition or collector grade Turkish walnut stock
- Leather covered recoil pad
- Gold oval in stock, engraved with initials or crest
- Gold inlaid distance number on back sight
- Gold inlaid 'John Rigby & Co.' and calibre on scope rings
- Gold inlaid Rigby 'double R' logo on underside of action
- Gold inlaid Rigby 'double R' logo in stock
- Gold inlaid animal of choice
- Gold inlaid Rigby 'Seal' logo on base of action
- Rigby full "Pensbury Scroll" engraving, deep cut and stippled

- Rigby full "St. James Scroll" engraving, deep cut and stippled
- Custom engraving
- Scroll engraving on scope rings
- Bespoke scope mounts with cover plates
- Case colour hardened scope rings
- Traditional oak and leather case with protective outer canvas cover
- Lightweight leather case with protective outer canvas cover
- Vintage pattern canvas case
- Leather pouch with spare parts



Rising Bite Shotgun

At John Rigby & Co. we have recommenced production of our iconic Rising Bite shotgun after a break in production of over 100 years. Just like its rifle counterpart, the Rising Bite shotgun is characterised by the unique Rigby patent Rising Bite action, well regarded for its strength.

Entirely built in London by Rigby's skilled team of gunmakers, the shotgun is a re-emergence of traditionalism. Each of its distinctive features are a symbol of heritage and honour Rigby's proven designs of the past. Available in 12, 28, 32-bore and .410, the new Rigby Rising Bite shotgun offers a distinctive alternative for the discerning game shot.

Every new Rigby pays homage to those iconic guns of the past and this new shotgun is no exception.





Rising Bite Shotgun



Custom fitted stock made from deluxe grade Turkish walnut

Best sidelock ejector with classic Rigby dipped edge lock plates

Choice of barrel length

Lever forend release catch and ejector regulation switch inside forend

Bespoke designed engraving available at client's request

Traditional English straight hand grip

STANDARD FEATURES

- Best sidelock ejector with signature Rigby dipped edge lock plates
- Choice of barrel lengths
- Chopper lump barrels
- Rigby top extension with vertical bolt
- Automatic or manual safety available
- Traditional lever forend release catch
- 'London Best' barrel black and finishing
- 2 ¼-inch chambers
- Fixed chokes – constriction by client choice

- Concave game rib
- Double triggers
- Deluxe grade Turkish walnut stock
- Traditional English straight hand grip with chequered butt
- Silver oval
- Custom stock fitting
- Traditional 'Rigby Scroll' pattern with carved folding leaves on fences. Gold inlaid 'J. Rigby & Co.' on sidelocks and barrels. Available in colour case hardened or brush bright finish on action

CALIBRES

- The Rising Bite shotgun is available in the following calibres:
- 12-bore
 - 20-bore
 - 28-bore
 - 32-bore
 - .410-bore

UPGRADES AND ACCESSORIES

Rising Bite shotgun upgrades include: a choice of deluxe, collector or exhibition grade Turkish walnut stock blank; custom designed engraving pattern as per clients specification; choice of grip style with traditional English straight hand grip, half pistol, full pistol or Prince of Wales grip also available; extra interchangeable barrels and variable chokes. Bespoke oak and leather cases as well as lightweight leather cases and leather shotgun sleeves available at client's request.

DISCOVER MORE





Rising Bite Shotgun Upgrades

Our shotguns can be personalised and upgraded as desired. The lists of upgrades published here are non-exhaustive. Please contact us to discuss any additional features you would like and up-to-date prices.

- Deluxe, exhibition or collector grade Turkish walnut stock
- Gold oval
- Gold inlaid Rigby 'double R' on base of action
- Custom engraving
- Leather covered recoil pad

- Grip style: half pistol, full pistol or Prince of Wales
- Heel and toe plate
- Skeleton heel plate
- Extra interchangeable barrels
- Variable chokes





Falling Block

A living testament to the enduring allure of traditional guns, the Rigby Falling Block rifle heralds the revival of a legacy. With a heritage rooted in the late Victorian era, this masterpiece captures the very essence of the innovation and craftsmanship that once defined Farquharson rifles of yesteryear.

The rifle is built around a true Farquharson action, identical to the original patented John Farquharson design of 1875 and a strong match to the historic Rigby-made Farquharson rifles in the company's historic ledger books, allowing hunting enthusiasts to delve into the golden age of hunting, while embracing the advancements of the modern day.

“The drawings and the designs that I used for inspiration were from a .500 Rigby Falling Block rifle. I changed it slightly and used modern manufacturing methods.”



Falling Block



Custom fitted deluxe grade Turkish walnut stock

Stippled top to rib and sight blocks

Rigby pattern iron sights

London Best barrel black

Colour case hardened grip cap

A LEGACY REVIVED

The Rigby Falling Block rifle embodies the spirit of traditional craftsmanship, seamlessly blending historic design with contemporary know-how. Rooted in the iconic Farquharson design, this rifle invites enthusiasts to experience the rich heritage of hunting while celebrating the rifle's timeless allure, a legacy that transcends time.

STANDARD FEATURES

- Rigby pattern iron sights
- Choice of deluxe Turkish walnut stock blank
- Custom stock fitting
- Silver oval in stock, engraved with initials
- Stippled top to rib and sight blocks
- 'London Best' standard engraving
- Gold line on rear sight
- 'London Best' barrel black and oil finish
- Colour case hardened grip cap

CALIBRES

The Falling Block is available in the following calibres:

- .303 British
- .350 Rigby No.2
- .450 3 & ¼ Nitro Express
- .600 Nitro Express

UPGRADES AND ACCESSORIES

The Rigby Falling Block upgrades include a choice of deluxe, exhibition or collector grade Turkish walnut stock blank. Custom engraving and full Rigby scroll engraving are available, along with gold and white gold inlay options. For protection and transport, Rigby provides a full-length leather case, a vintage pattern case, or an oak-rimmed leather case, complete with additional accessories and an outer canvas cover. For more information on upgrades and accessories, please contact us.

DISCOVER MORE





Falling Block Upgrades

All our rifles can be personalised and upgraded as desired. The lists of upgrades published here and on our website are non-exhaustive. Please contact us to discuss any additional features you would like and up-to-date prices.

- Deluxe, exhibition or collector grade Turkish walnut stock
- Rigby full 'Pensbury Scroll' engraving, deep cut and stippled
- Rigby full 'St. James Scroll' engraving, deep cut and stippled

- Leather covered recoil pad
- Custom engraved design
- Full length rib on barrels
- Gold or white gold oval in stock
- Gold or white gold Rigby 'double R' logo in stock



“With the Shikari, we’ve not only resurrected a classic but reimagined it for the modern adventurer. It embodies the essence of a 21st-century hunter, seamlessly blending tradition with time-honoured craftsmanship.”

Shikari Rifle

With roots that trace back to the late 19th century, the Rigby boxlock double was a stalwart companion for colonial game wardens and Professional Hunters. The first .450 rifle, featuring the 1884 Webley & Brain patent screw-grip on an Anson & Deeley action, gained a reputation for reliability in Africa and India. As demand grew for dependable rifles,

Rigby solidified its legacy. Today, inspired by original designs in the Rigby Museum, the Rigby team has revived this classic with the Shikari model. This modern iteration embodies the timeless spirit of its predecessors, inviting hunters to experience the thrill of an African safari with a Rigby rifle in hand.





Shikari Rifle



Anson & Deeley
boxlock ejector action

The maker's name
on the barrels

Rigby pattern
iron sights

Custom fitted deluxe grade
Turkish walnut stock

Traditional boxlock
border engraving

Traditional London Best
oil finish

STANDARD FEATURES

- Best boxlock ejector
- Colour case hardened action, forend and furniture
- Choice of barrel length
- 'London Best' barrel black
- Shoe lump barrels
- Regulated to 50 yards with client's choice of ammunition
- Rigby doll's head top extension
- Lever forend release catch
- Choice of deluxe grade Turkish walnut
- London Best oil finish
- Custom stock fitting

SHIKARI SPECIAL EDITION

This model shares all the same specifications of the Shikari but offers an upgrade to exhibition Turkish walnut stock, Rigby pattern boxlock scroll engraving and is presented in a traditional oak and leather double rifle case, handcrafted by Traditional English Guncases (TEG) London.

CALIBRES

The Shikari Rifle is available in the following calibres:

- .450/400 Nitro Express
- .450 3/4" Nitro Express
- .470 Nitro Express
- .500 Nitro Express

UPGRADES AND ACCESSORIES

Shikari rifle upgrades include a silver or gold oval in the stock, engraved with your initials or crest. A durable metal butt plate adds a classic touch. For more information on these upgrades and accessories, please contact us.





Shikari Rifle Upgrades

All our rifles can be personalised and upgraded as desired. The lists of upgrades published here and on our website are non-exhaustive. Please contact us to discuss any additional features you would like and up-to-date prices.

- Deluxe, exhibition or collector grade Turkish walnut stock
- Silver oval in stock, engraved with initials or crest
- Gold oval in stock, engraved with initials or crest
- Full metal butt plate
- Leather covered recoil pad
- Colour case hardened scope rings

- Full-length rib on barrels
- Gold Rigby double R logo in stock
- “Pensbury scroll” engraving
- “St. James scroll” engraving
- Custom engraving design
- Extra interchangeable barrels





Rigby Engraving

Rigby offers a range of exquisite engraving options, customers can choose from traditional Rigby 'Pensbury' or 'St. James' scroll, as well as animal scene engravings, complemented gold, silver, white gold, and other precious metal inlays and enamelling. The addition of family crests or initials to ovals provide further personalisation. Rigby's skilled in-house

engravers are dedicated to bringing your ideas to life, ensuring you are informed throughout the entire process. This commitment to craftsmanship allows us to create a unique and functional piece of art, reflecting your personal style and interests. If you have an idea, speak to our team about making it a reality.



Rigby Engraving

At Rigby, we offer an extensive range of engraving options tailored to meet your unique needs. Whether you're interested in traditional designs or fully custom commissions, our team of skilled engravers are

here to bring your vision to life. Speak with a member of our team to discuss your ideas. We look forward to collaborating with you on a truly personalised engraving experience.





Rigby Wood Cellar

The Rigby Wood Cellar is a specialised service that allows customers to hand-select and secure premium walnut stock blanks at current market rates for future bespoke gun creations. Recognising the increasing difficulty and cost of sourcing high-quality walnut, Rigby provides enthusiasts and collectors the opportunity to invest in top-tier blanks while enjoying significant savings.

Each blank is stored in a secure, humidity and temperature-controlled environment at Rigby, preserving its condition until ready for use. Customers can choose from fully dry or more cost-effective wet blanks and receive annual reports on their investment's condition. Personalised assistance is available for matching blanks from the same tree, ensuring a harmonious finish for sets, trios or collections. Additionally, a portion of the proceeds supports sustainable walnut tree replanting, reinforcing Rigby's commitment to environmental responsibility.

For more information or to speak with Rigby's head stock maker, Martin Levis please email: martin@johnrigbyandco.com.



New Rigby wood grading system

Old Wood Grade	2-4	5-6	7-8	9-10	11+
New Wood Grade	PH	Adventurer	Deluxe	Exhibition	Collector



Rigby Art

Rigby Art is a dedicated space where our talented in-house engravers and a global team of sporting artists can showcase their remarkable skills in the realms of hunting and outdoor life. Here, you will find a diverse collection of sculptures, drawings, lithographic prints, and carvings, all inspired by Rigby's rich history and the thrill of adventure. Each piece is numbered and stamped with the

Rigby name, allowing purchasers to become part of our heritage, with their names entered into the hallowed Rigby ledger books, akin to the legendary figures like Corbett and Bell. This connection to the past fosters a sense of belonging among modern-day Rigby adventurers. At John Rigby & Co., we pride ourselves on creating art that reflects our unique vision and commitment to quality.

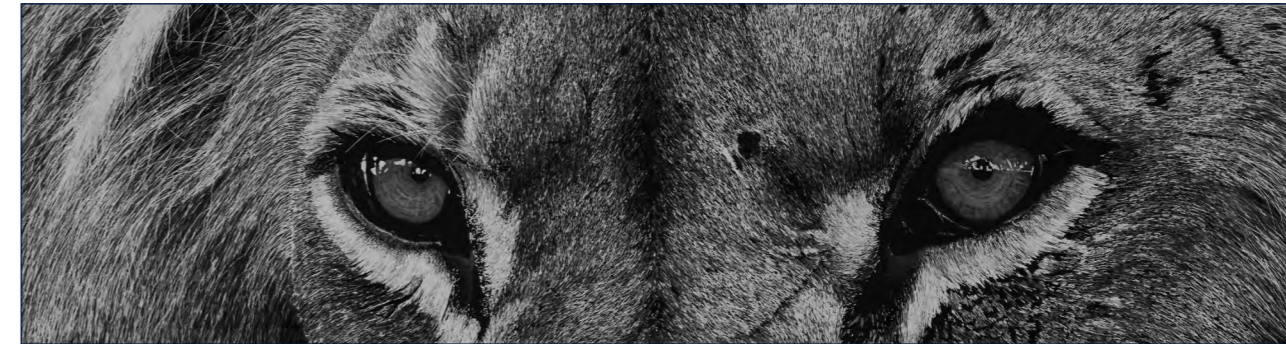


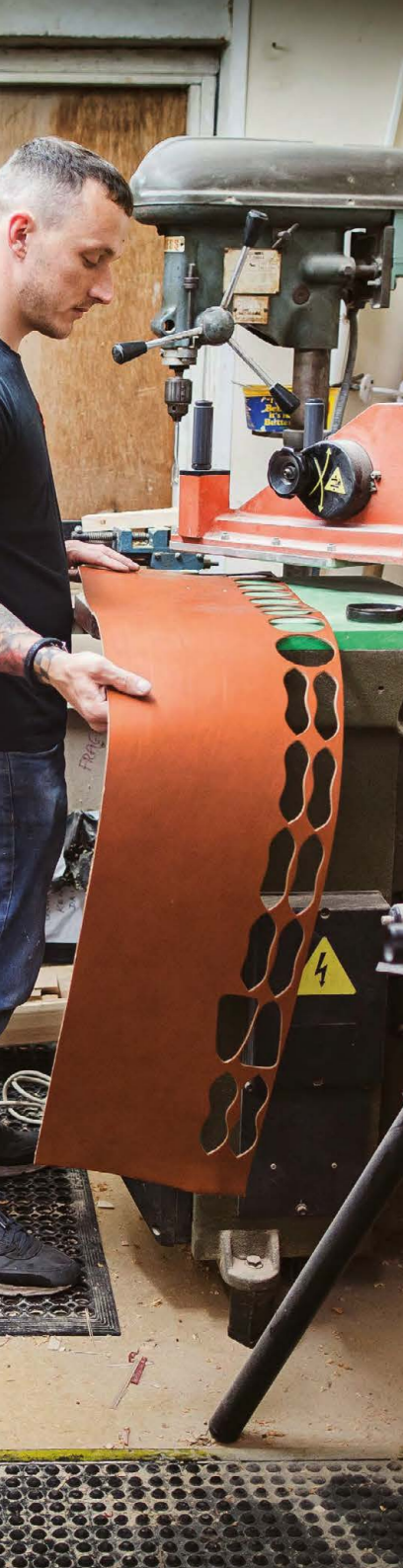


Rigby Art

Rigby Art has assembled a global team of talented sporting artists to ignite your sense of adventure through captivating artwork. With a diverse collection of original and limited edition pieces available for purchase, we invite you to explore the artistry that celebrates the spirit of the outdoors. For those looking for

something truly unique, our team is ready to assist you in commissioning your own bespoke piece that reflects your personal vision and passion for adventure. Reach out to us today to discuss your ideas and start your artistic journey with Rigby Art.





Traditional English Guncases (TEG)

Traditional English Guncases (TEG) London, a family-owned business established in 1987 and now partnered with Rigby, is renowned for its exceptional craftsmanship in producing high-quality, bespoke gun and rifle cases. Each case is handcrafted to order using the finest British-sourced materials, ensuring that your valuable gun receives the protection it deserves. Clients can choose from a range of materials, including lightweight canvas and leather or luxury oak and leather combinations, while the interior features

baize-lined compartments available in various colours, tailored to fit your shotgun or rifle. TEG's commitment to quality is reflected in the hand-stitched construction, reinforced leather components, and solid brass fittings, alongside a variety of customisation options such as initialled cartouches and bespoke interior layouts. The exquisite artistry and attention to detail make TEG cases not only functional but also stunning pieces, preferred by discerning gun owners and collectors worldwide.



A man in a safari outfit stands on a rocky bank by a stream at sunset. He is wearing a light-colored short-sleeved shirt, shorts, a cap, and boots. He has a rifle slung over his shoulder and is holding binoculars. The background features tall grasses, trees, and a bright sunset sky with a golden sun. The scene is reflected in the water of the stream.

Rigby Accessories

A gun is the principal tool of a hunter's trade, but from one generation to the next, adventurers have always relied on the very best supplementary kit to ensure they are sufficiently equipped to tackle routine and

unforeseen challenges that arise along the way. So, when preparing for your next expedition, begin by filling your campaign trunk with a selection of Rigby's finest accessories. They won't let you down.

“With adventure to be found around the world, Rigby's Shikar Store has all the kit you need to be prepared for every eventuality.”



Rigby Accessories



Rigby 250th Anniversary Notebook



Rigby 250th Anniversary Enamel Mug



Rigby 250th Anniversary Poster



Rigby Whisky Bar



Rigby Dagga Boy Book



Rigby Blue Hoodie



Rigby 250th Anniversary Pin Badge



Rigby 250th Anniversary Playing Cards



Rigby Hunting Shirt Collection (Pack of four)



Rigby Canvas Belt and Pouch



Rigby Baseball Cap Set



Rigby Shooting Vest



Rigby Dagga Boy Award

The bi-annual Rigby Dagga Boy Award aims to promote ethical hunting practices and contribute valuable scientific data on African buffalo populations. This award emphasises the importance

of a buffalo's age over mere trophy measurements, fostering a healthier and more robust buffalo population across the African continent.



Rigby Dagga Boy Award

To enter, hunters must submit a detailed hunt report along with photos of qualifying buffalo bulls taken during the hunting season.

Entries should be sent electronically to daggaboy@johnrigbyandco.com and must include high-quality images of the hunt and buffalo, including images of the buffalo's ears, teeth, and body.

Judges, including renowned experts in the field, will evaluate entries based on specific criteria. Only wild and free-ranging buffalo bulls from self-sustaining herds are eligible. The hunt must be conducted in an ethical, fair chase manner, such as track, walk-and-stalk hunting. Bulls from managed populations or

those receiving nutritional assistance are not eligible for consideration. The focus is on 'old' and 'broken-horned' bulls that have surpassed breeding age.

Judges will consider factors such as the difficulty of the hunt and the age of the buffalo, assessing signs like boss development, horn tip position, muscling, body colour, ear condition, facial markings, and hoof size. The winner will receive a Rigby .416 Big Game rifle, while the guiding Professional Hunter will be awarded a Rigby .450 PH rifle. By participating, hunters contribute to buffalo conservation efforts and promote responsible hunting practices, ensuring the legacy of ethical hunting continues for future generations.



Rigby Safaris

Adventurers and sportsmen have been knocking on our door since the third John Rigby brought his business to London in the 1860s. Since then, legendary hunters, like Jim Corbett and 'Karamojo' Bell, have numbered among the more famous of our customers but the name Rigby has inspired generations of sportsmen from all walks of life to take to the wild places in search of adventure.

Today, we offer bespoke safari experiences that equal the quality and sentiment put into our gunmaking worthy of bearing the Rigby name.

Come with us and forge lasting memories, with Rigby in hand. No matter the continent you wish to hunt, Rigby is your outfitter.



Since the very beginning, Rigby rifles have epitomised adventurous spirit in its most elemental form. Yet, it is a Rigby Safari that makes carrying a Rigby an adventure of a lifetime.

Authorised Dealers

AUSTRALIA

GERMANY

MALTA

SWEDEN

AUSTRIA

HUNGARY

NEW ZEALAND

SWITZERLAND

BELGIUM

INDIA

NORWAY

TURKEY

CANADA

ITALY

SPAIN

UK

DENMARK

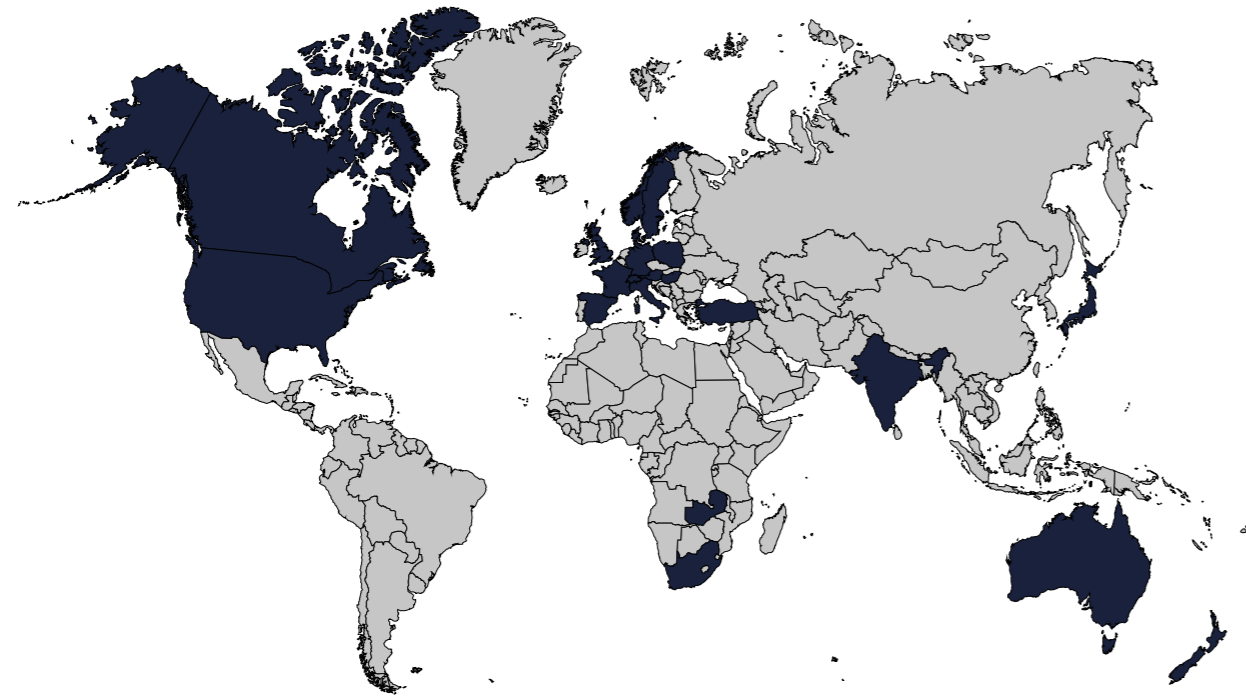
JAPAN

SOUTH AFRICA

USA

FRANCE

ZAMBIA





johnrigbyandco.com